



...connecting your business

LANCOM L-320agn Wireless

Quick Reference Guide



Please observe the following when setting up the device

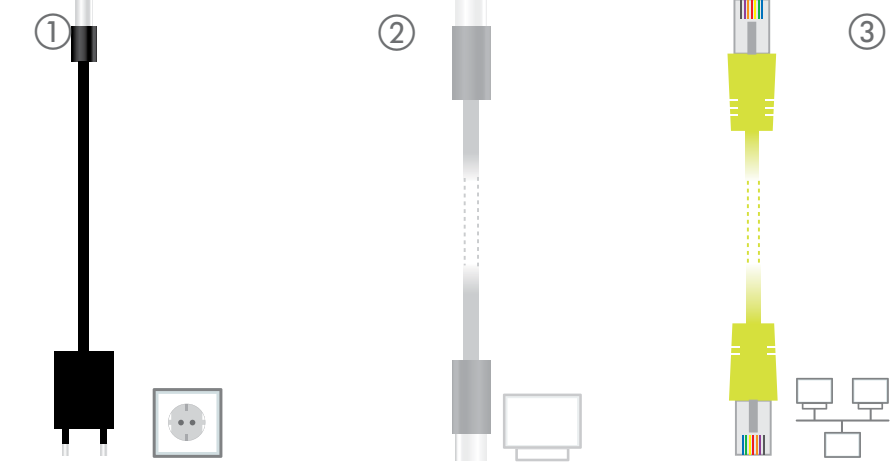
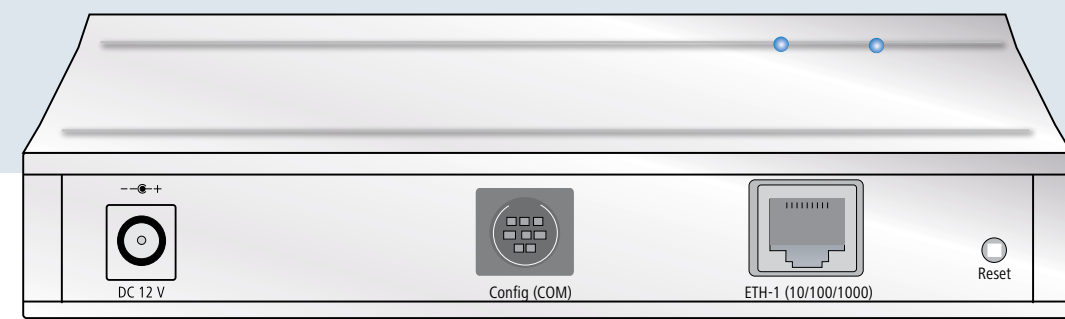
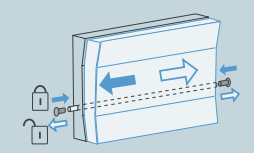
- For devices to be operated on the desktop, please attach the adhesive rubber footpads
- Do not rest any objects on top of the device



- Keep the ventilation slots on the side of the device clear of obstruction
- In case of wall mounting, use the drilling template as supplied

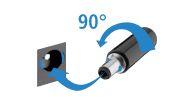


- Lockable wall mounting with the LANCOM Wall Mount (available as an accessory).



①

Power
When connecting the cable to the device, turn the bayonet connector 90° clockwise until it clicks into place.



Use only the supplied power adapter.

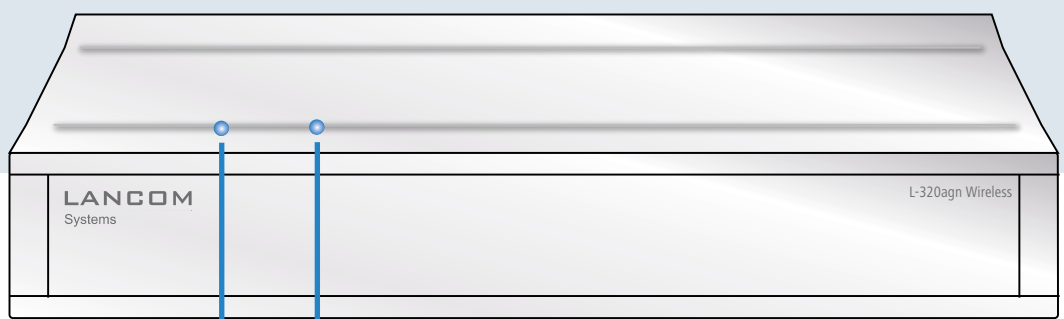
②

Optional: Serial configuration cable:
You can connect the device to a PC with a configuration cable (available separately).

③

LAN
Use the cable with the kiwi-colored connectors to connect the interface ETH to your PC or a LAN switch.

MOUNTING AND CONNECTING THE DEVICE



① Power

Off	Device switched off
Green, on (permanently)	Device operational
Blinking green	Configuration password not set. Without a configuration password, the configuration data in the device is unprotected.
Blinking alternately orange/green with the online LED	At least one WLAN module is in managed mode and has not found a WLAN Controller yet. The corresponding WLAN module(s) is/are switched off until a WLAN Controller is found to supply a configuration, or until being switched manually into another operating mode.
Blinking alternately orange/red with the online LED	At least one WLAN module is in managed mode and has found a WLAN Controller. However, the WLAN Controller cannot assign a configuration because the firmware and/or the device's loader version is not compatible with the WLAN Controller.

② Online

Off	No networking device attached
Green, on (permanently)	Connection to network device operational, no data traffic
Flickering green	Data traffic

License information for the device firmware (LCOS) is available in the file LCOS-Licenses.txt on the data medium supplied.

Hardware	
Power supply	12 V DC, external power adapter (110 or 230V) with bayonet connector to secure against disconnection
Power consumption	Approx. 7.25 watt via 12V/1 A power adapter (value refers to the overall power for the access point and power adapter), about 9.85 watts via PoE
Environment	Temperature range 0–45°C, humidity 0–95%; non-condensing.
Housing	Robust synthetic housing, rear connectors, ready for wall mounting, Kensington lock; measures 210 x 45 x 140 mm (W x H x D)
Number of fans	None; fanless design, no rotating parts, high MTBF
WLAN	
Frequency band	2400-2483.5 MHz (ISM) or 5150-5825 MHz (restrictions vary between countries)
Radio channels 2.4 GHz	Up to 13 channels, max. 3 non-overlapping (2.4-GHz band)
Radio channels 5 GHz	Up to 26 non-overlapping channels (channels available vary according to country regulations; DFS for automatic dynamic channel selection required)
Interfaces	
ETH	10/100/1000 Base-TX, autosensing, auto node hub, PoE compliant with IEEE 802.3af
DSL over LAN (DSLol)	The LAN port can (even parallel to LAN mode) be used as a WAN port for connecting external DSL modems (PPPoE) or external routers.
Serial interface	Serial configuration interface / COM port (8-pin Mini-DIN): 9,600 - 115,000 baud
Declaration of conformity	
CE	EN 301 489, EN 60950
2.4 GHz WLAN	ETS 300 328
5 GHz WLAN	EN 301 893, EN 302 502 (BFWA)
Wi-Fi Alliance certification	802.11a/b/g/n Wi-Fi Certified
Notifications	Certifications notified in Germany, Belgium, Netherlands, Luxembourg, Austria, Spain, Switzerland, UK, Italy, Portugal, Czech Republic, Denmark, Malta, France, Finland, Greece, Ireland, Liechtenstein, Norway, Sweden, Cyprus
Package content	
Manual	Quick Reference Guide (DE/EN) and Quick Installation Guide (DE/EN/FR/ES/IT/PT/NL),
CD/DVD	CD/DVD with firmware, management software (LANconfig, LANmonitor, LANCAPI) and documentation
Cable	Ethernet cable, 3m (LAN: kiwi-colored connectors; WAN: green connectors)
Power adapter	External power adapter, NEST 12 V/1.5 A DC/S, barrel connector 2.1/5.5 mm bayonet, LANCOM item no. 110723 (EU, 230 V), LANCOM item no. 110829 (UK, 230 V)

LANCOM, LANCOM Systems and LCOS are registered trademarks. All other names or descriptions used may be trademarks or registered trademarks of their owners. Subject to change without notice. No liability for technical errors and/or omissions. 1110701112