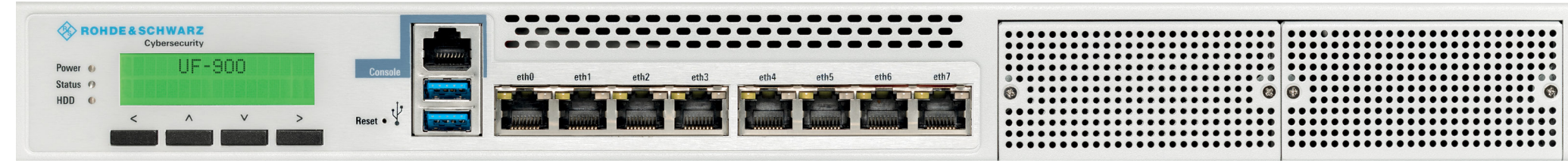


LANCOM R&S® UF-900

Quick Reference Guide



1 Configuration interface RJ45 (Console)
This maintenance interface for expert configuration is not required for first use.

2 USB 2.0 interfaces
These interfaces for software re-installation are not required for first use.

3 TP Ethernet interfaces eth0 - eth7
Connect the eth0 - eth7 TP Ethernet interfaces with the enclosed Ethernet cable to your configuration PC or other networking components. Initial setup advice can be found in the supplied quick install guide.



4 Slots for extension modules
After having removed the faceplates you can optionally insert up to two modules (RJ45, SFP or SFP+) into the slots.

5 Power switch (rear side)
Power on the device after having connected all power cables.

6 Power supply modules (rear side)
Supply power to the device via both power connectors. Please use the supplied IEC power cables.



Please observe the following when setting up the device

- > The mains plugs of the device must be freely accessible.
- > Do not rest any objects on top of the device and do not stack multiple devices.

- > Keep the device's ventilation slots clear of obstruction.
- > Mount the device into a 19" unit in a server rack using the provided mounting accessories.

MOUNTING AND CONNECTING THE DEVICE



1 LEDs Power / HDD	
Power off	Device switched off
Power green	Device operational
HDD off	no HDD read-/write access
HDD orange, flickering	HDD read-/write access

2 LCD display (two lines) with menu buttons
Menu buttons < and > For displaying the IP address allocations



3 LEDs eth0 - eth7 - TP Ethernet	
Both off	No networking device attached
Left orange flickering	Data transfer 1000 Mbps
Right orange, permanently	
Left orange, flickering	Data transfer 100 Mbps
Right green, permanently	
Left orange, flickering	Data transfer 10 Mbps
Right off	

Hardware	
Power supply	2 power supply modules (100–240 V, 50–60 Hz)
Power consumption	max. 300 W each active power supply module
Environment	Temperature range 0–40 °C; humidity 5–90 %; non-condensing
Housing	Robust metal housing, 1 HU with mounting brackets for 19" installation, network connectors on the front
Fans	3
Dimensions (mm)	431 x 44 x 468 (W x H x D)
Interfaces	
ETH	8x 10 / 100 / 1000 Mbps Gigabit Ethernet ports
USB	2x USB 3.0 port
Console	RJ45 configuration interface
Declaration of conformity	
Hereby, LANCOM Systems declares that this device is in compliance with Directives 2014/30/EU, 2014/35/EU, and 2011/65/EU. The full text of the EU declaration of conformity is available at the following internet address: www.lancom-systems.com/ce/	
Package content	
Documentation	Quick Reference Guide (DE, EN), Quick Install Guide (DE, EN), Service & Support Guide (DE, EN)
Accessories	1 Ethernet cable; 2 IEC power cords 230 V; 1 serial configuration cable; 2 19" brackets for rack mounting, 2 fastening rails, 2 guiding rails
Optional accessories	
Extension modules	LANCOM R&S 8x 1G RJ45 Module (item no. 55121), LANCOM R&S 4x 1G SFP Module (item no. 55122), LANCOM R&S 4x 10G SFP+ Module (item no. 55123)