

LANCOM

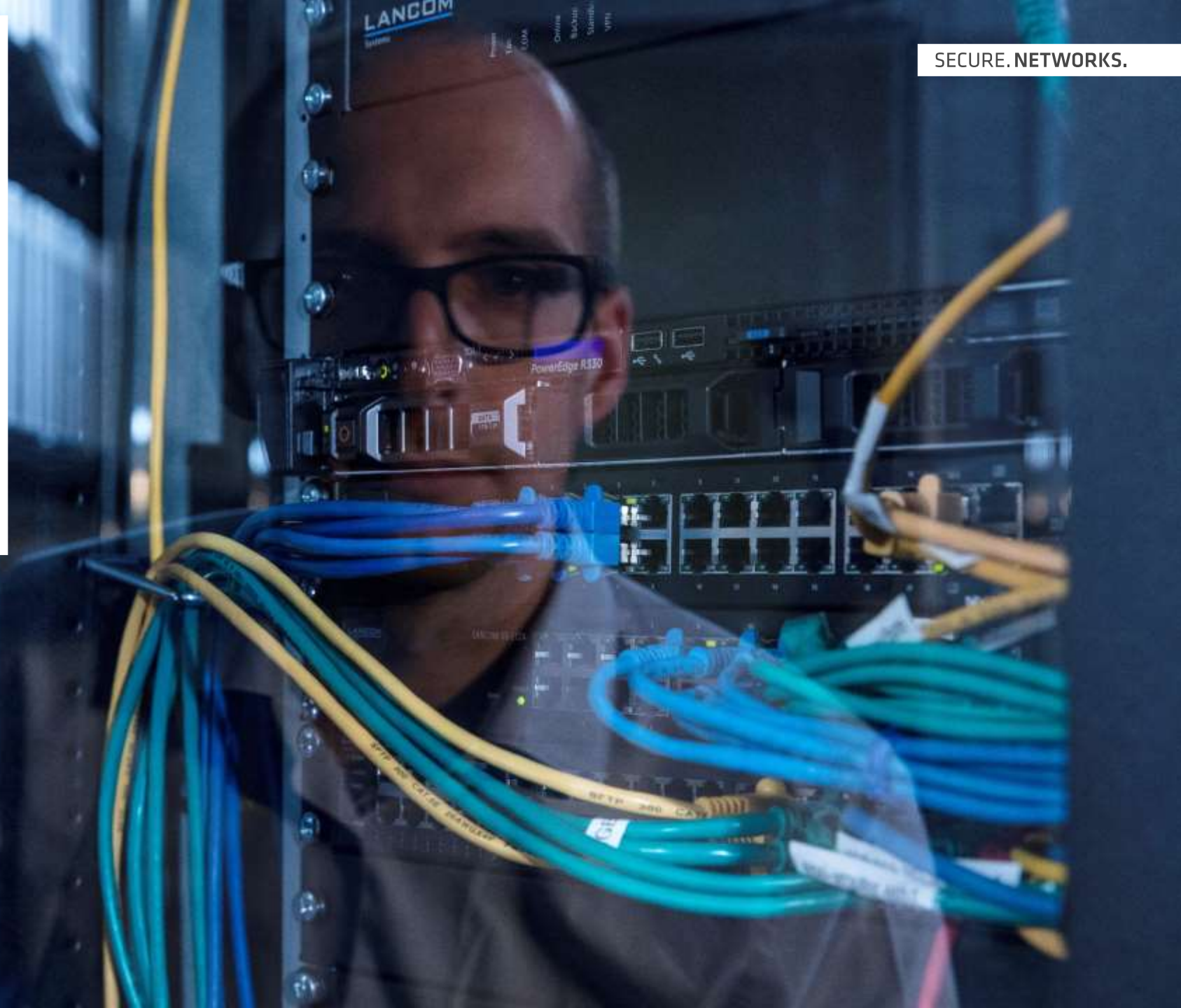
Systems

FEATURE NOTES

LCOS 10.20 RC1

LCOS 10.20 RC1
[LANCOM OPERATING SYSTEM]

SECURE. NETWORKS.



LCOS 10.20 RC1

THE LCOS PROMISE



The free operating system LCOS (LANCOM Operating System) is the in-house closed-source firmware for the entire core portfolio of products from LANCOM Systems GmbH. LCOS is developed at our headquarters in a maximum security zone that is certified by the BSI (the German Federal Office for Information Security). Several times a year LCOS benefits from software updates with new features and enhancements. Moreover, the quality seal "IT Security Made in Germany" (ITSMG) from an independent authority guarantees that LCOS is free from backdoors. LCOS constantly undergoes quality testing so that it offers the highest degree of reliability for professional network infrastructures. Thanks to hardware that is dimensioned for the future, LANCOM products are designed for a long service life and support of the latest versions of LCOS. Even our older devices that no longer support current versions of LCOS are, when necessary, provided with bug fixes that are based on the latest available firmware. LANCOM offers unbeatable safeguarding of your investment.

HIGHLIGHT

LEPS-U / LEPS-MAC

FULL ACCESS CONTROL FOR YOUR WI-FI

Keep control of who is in your Wi-Fi. With LEPS-U (LANCOM Enhanced Passphrase Security – User), individual clients or entire groups each receive a unique Wi-Fi password for an SSID. Using LEPS-MAC, you additionally authenticate the clients by their MAC address—ideal for secure corporate networks.



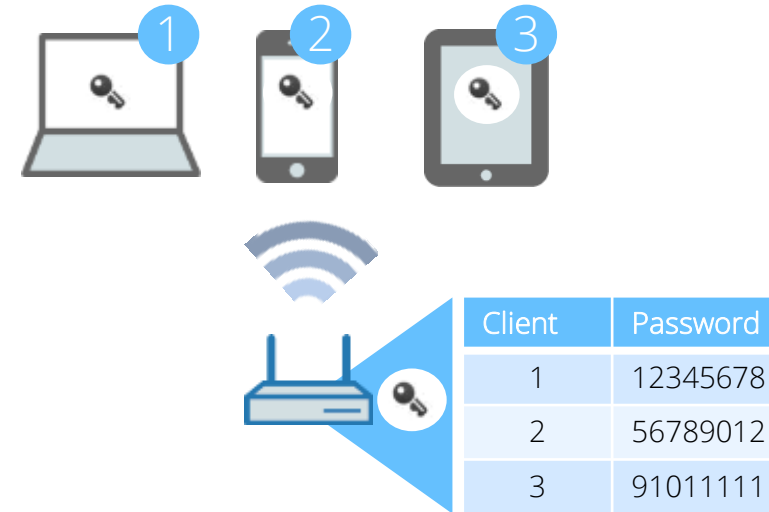
HIGHLIGHT

LEPS-U / LEPS-MAC

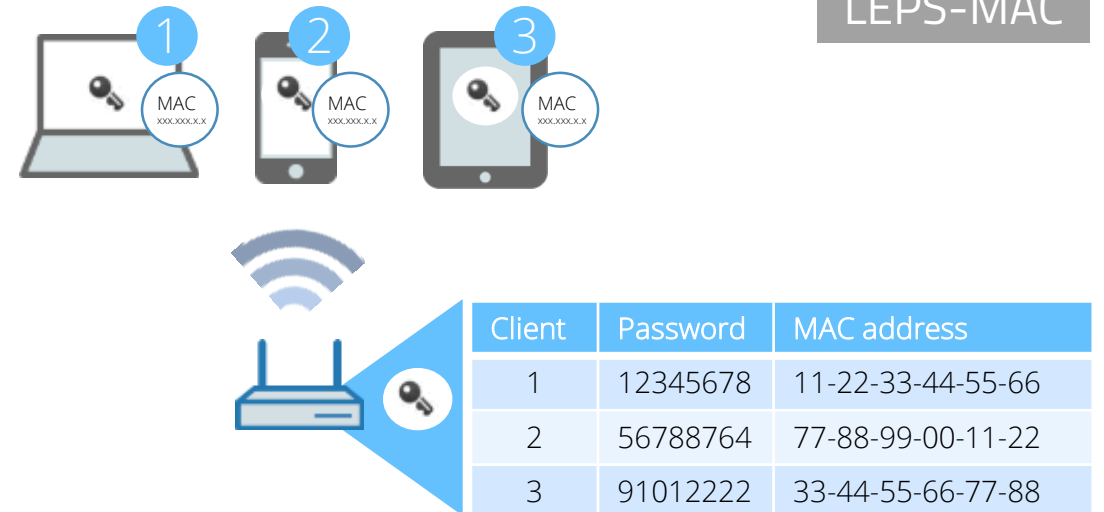
MORE CONTROL FOR YOUR WI-FI USER MANAGEMENT

- With LEPS-U (LANCOM Enhanced Passphrase Security – User), individual clients or entire groups each receive a unique Wi-Fi password for an SSID → Enables individual management of clients
- Furthermore: LEPS-MAC authenticates the clients by their MAC address

LEPS-U



LEPS-MAC



HIGHLIGHT

CLIENT MANAGEMENT FOR BEST-EVER WI-FI

Client Management steers Wi-Fi clients to the best available access point and frequency band. This feature improves the quality of wireless networks of all sizes—whether they operate stand-alone or orchestrated by the LANCOM Management Cloud. The popular Band Steering and Client Steering, which so far were separate features, have now been combined and even operate without a WLAN controller.

SECURE. NETWORKS.

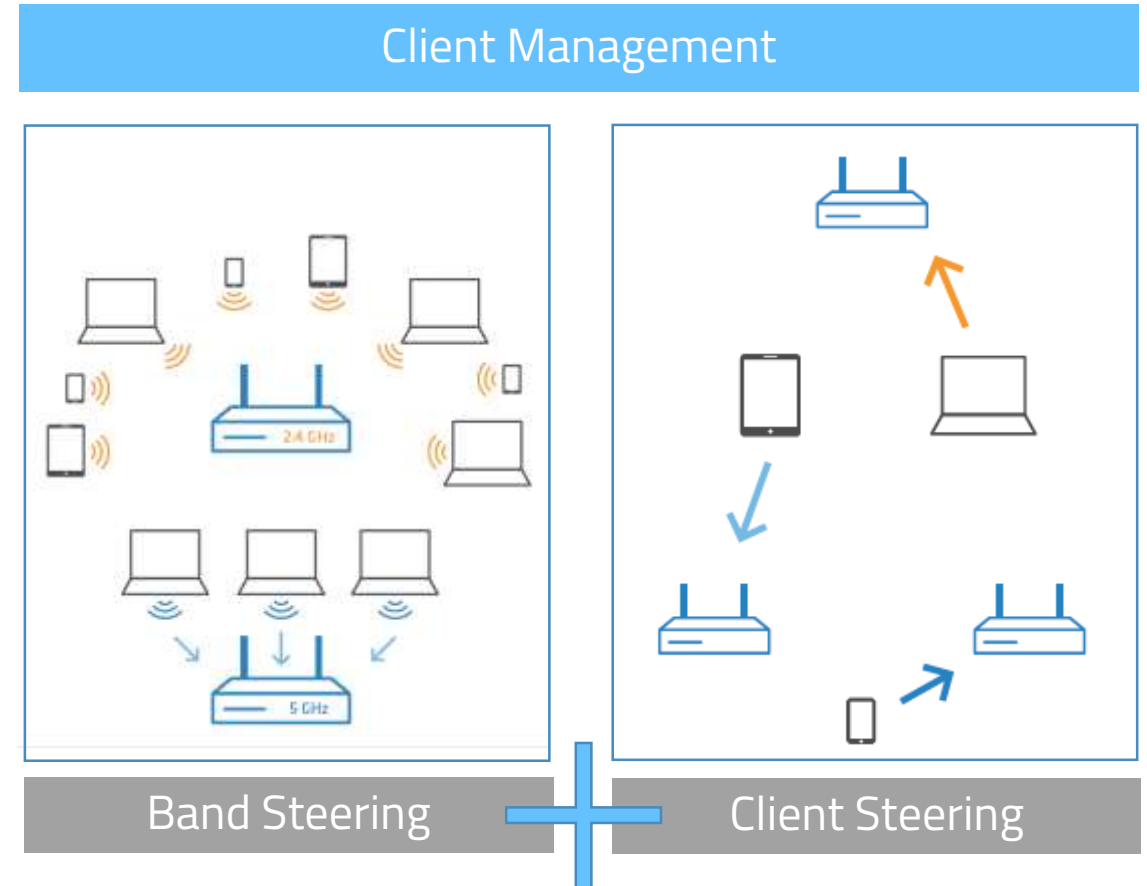


HIGHLIGHT

CLIENT MANAGEMENT

FOR BEST-EVER WI-FI

- Steers Wi-Fi clients to the best available access point and frequency band
- Combines Client Steering and Band Steering
- Works completely independently – without a separate WLAN controller
- Ideal for use with the LANCOM Management Cloud
- Based on the standards IEEE 802.11k and 802.11v



PREVIEW

AUTO UPDATER

ALWAYS UP-TO-DATE

The Auto Updater keeps your installations up-to-date automatically: If desired, LANCOM devices can search for new software updates, and download and install them without any user interaction. You can choose whether to install only security updates, release updates, or all updates automatically. If automatic updates are not desired, the feature can still be used to check for new updates, which can then be installed with a single click.



PREVIEW

AUTO UPDATER

ALWAYS UP-TO-DATE

- LANCOM devices can search for new software updates, and download and install them without any user interaction

SECURE. NETWORKS.

Your choices:

- Install only security updates automatically
- Install only security updates and release updates automatically
- Install security updates, release updates, and release versions automatically

HIGHLIGHT

WAN POLICY-BASED NAT

EASY USE OF NAT IN FIREWALL RULES

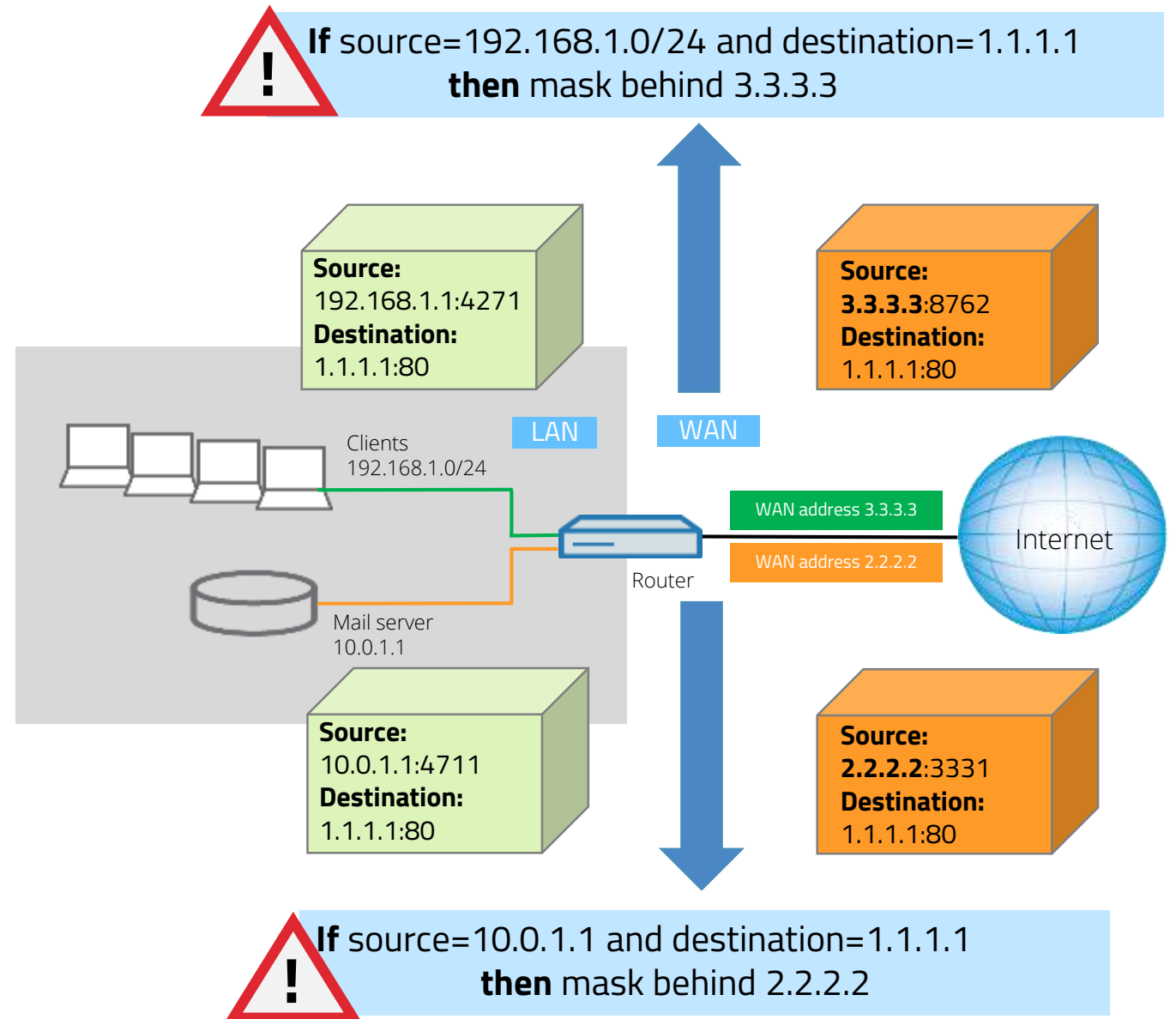
WAN Policy-Based NAT allows an easy assignment of static WAN IPv4 addresses to desired services. Due to a NAT action in the firewall rules internal addresses are masked behind a WAN address from the Internet access provider. Ideal for scenarios e.g. for the operation of mail servers and web servers with different WAN addresses.



WAN POLICY-BASED NAT

MORE FLEXIBILITY IN NAT

- Due to a NAT action in the firewall rules internal addresses are masked behind a WAN address from the Internet access provider
- Ideal for scenarios e.g. for the operation of mail servers and web servers with different WAN addresses



DSL BRIDGE MODE

MORE FLEXIBILITY FOR WAN CONNECTIONS



- VDSL routers now operate optionally in DSL bridge mode → This allows a device to work purely as a DSL modem.
- Suitable for scenarios where multiple DSL connections are operated on one router
- Ideal in combination with the LANCOM 730VA



LANCOM vROUTER

EXTENDED FEATURE SET

- As of now: support of the hypervisor-based virtualization technology **Hyper-V** from Microsoft
- Management more easier: Firmware updates can be imported as a UPX file

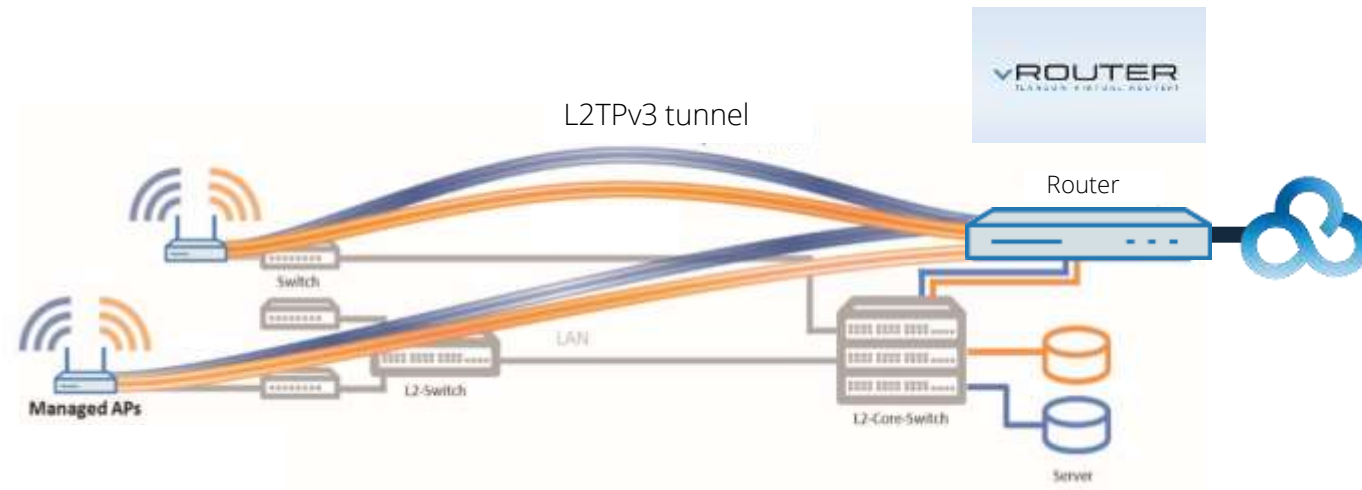


vROUTER
(LANCOM VIRTUAL ROUTER)

WLAN LAYER-3 TUNNELING

WITH THE LMC

- Traffic can be directed (overlay) through an existing infrastructure (routers, switches) without the use of complex VLANs
- Based on L2TPv3: Establishment of layer-3 tunnels from the access point to a router in LMC-based infrastructures



OCSP RESPONDER

MORE POWER FOR SMART CERTIFICATE

- Smart Certificate is the easy way to create digital certificates with your LANCOM device
- **New:** OCSP Server (Online Certificate Status Protocol) enables clients to automatically and efficiently query the integrated CA for the status of X.509 certificates



SUPPORT OF LISP

REALIZING HIGHLY SCALABLE OVERLAY NETWORKS

- LISP (Locator/ID Separation Protocol)
- Highly efficient overlay tunnel with routing function for service providers and enterprise



PUBLIC SPOT CSV IMPORT

PUBLIC SPOT MANAGEMENT IS
NOW EVEN EASIER

- Hotspot users are easily imported and exported by text file (CSV)



THANK YOU!
