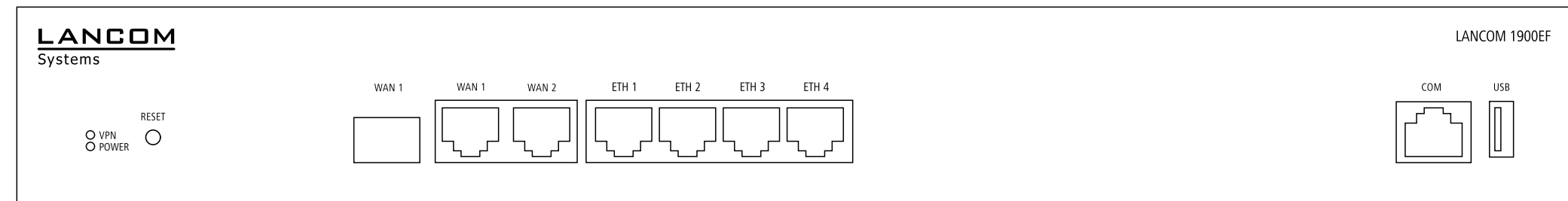
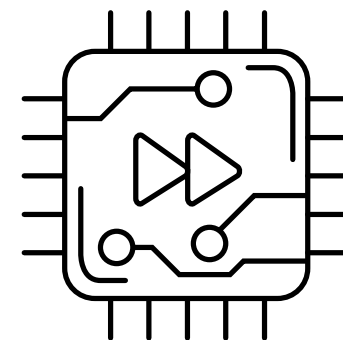
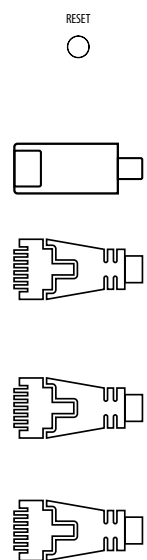


Hardware Quick Reference LANCOM 1900EF

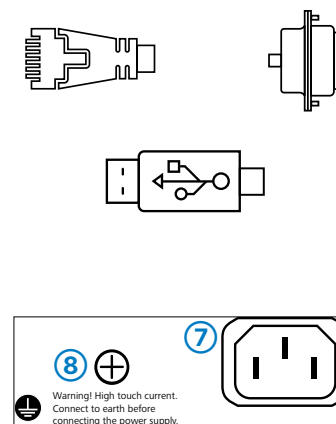


- ①
- ②
- ②
- ③
- ④
- ⑤
- ⑥

- ① **Reset button**
short press > Restart the device
long press > Reset the device
- ② **WAN 1 interfaces (SFP / TP combo port)**
Insert a suitable SFP module (e.g. 1000Base-SX or 1000Base-LX) into the SFP port. Choose a cable compatible with the SFP module and connect it as described in the module's documentation. SFP module and cable are not included.
If desired, alternatively connect the WAN 1 TP interface to a WAN modem using the provided Ethernet cable with green connectors.
- ③ **WAN 2 interface (TP)**
Connect the WAN 2 interface to a WAN modem using the provided Ethernet cable with green connectors.
- ④ **Ethernet interface**
Use the cable with the kiwi-colored connectors to connect one of the interfaces ETH 1 to ETH 4 to your PC or a LAN switch.



- ⑤ **Configuration interface**
To configure the device via the serial interface, a serial configuration cable is required (available as an accessory).
- ⑥ **USB interface**
You can use the USB interface to connect a USB printer or a USB storage device.
- ⑦ **Power connector and grounding point (device back side)**
Supply power to the device via the power connector. Please use the IEC power cable supplied (separately available for WW devices).
- ⑧ **ATTENTION: High touch current possible! Connect to earth before connecting the power supply.**



Before initial startup, please make sure to take notice of the information regarding the intended use in the enclosed installation guide!

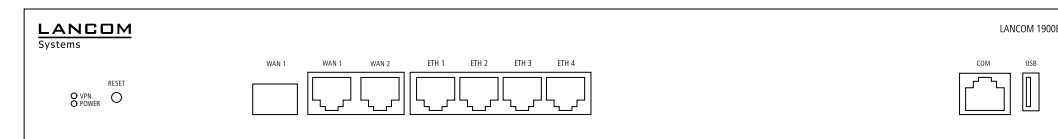
Operate the device only with a professionally installed power supply at a nearby power socket that is freely accessible at all times.



Please observe the following when setting up the device

- The mains plug of the device must be freely accessible.
- For devices to be operated on the desktop, please attach the adhesive rubber footpads
- Do not rest any objects on top of the device and do not stack multiple devices
- Keep all ventilation slots of the device clear of obstruction
- Mount the device into a 19" unit in a server cabinet using the provided screws and mounting brackets. Pay attention to the "R" and "L" marks on the brackets for accurate mounting.

Mounting & connecting



- ①
- ②
- ②
- ③

① VPN / POWER		② WAN 1 / WAN 2	
VPN		Green, orange off	No networking device connected
Off	VPN connection inactive	Green, permanently	Connection to network device operational, no data traffic
Green, permanently	VPN connection active	Green, flickering	Data transmission
Green, flashing	VPN connecting	Orange off	1000 Mbps
POWER		Orange, permanently	10 / 100 Mbps
Off	Device switched off	③ ETH 1 - ETH 4	
Green, permanently*	Device operational, resp. device paired / claimed and LANCOM Management Cloud (LMC) accessible	Green, orange off	No networking device connected
Green / red, blinking	No password set. Without a password the configuration data in the device is unprotected.	Green, permanently	Connection to network device operational, no data traffic
Red, blinking	Charge or time limit reached	Green, flickering	Data transmission
1x green inverse blinking*	Connection to the LMC active, pairing OK, device not claimed	Orange off	1000 Mbps
2x green inverse blinking*	Pairing error, resp. LMC activation code not available	Orange, permanently	10 / 100 Mbps
3x green inverse blinking*	LMC not reachable resp. communication error		

*) The additional power LED statuses are displayed in 5-seconds rotation if the device is configured to be managed by the LANCOM Management Cloud.

Hardware	
Power supply	Internal power supply unit (100-240 V, 50-60 Hz)
Power consumption	Max. 18 W
Environment	Temperature range 0-40 °C, humidity 0-95 %, non-condensing
Housing	Robust metal housing, 1 HU with mounting brackets for 19" installation, 345 x 44 x 253 mm (W x H x D)
Number of fans	None; fanless design, no rotating parts, high MTBF

Interfaces	
WAN 1 / WAN 2	WAN 1 SFP: Compatible with optional LANCOM SFP modules. Set as a WAN port ex-factory, can be configured as a LAN port. WAN 1 / WAN 2 TP: 10 / 100 / 1000 Base-TX, autosensing full duplex (WAN 1) / autosensing (WAN 2), auto node hub
ETH1 - ETH 4	4 individual ports, 10 / 100 / 1000 Mbps Gigabit Ethernet, by default set to switch mode. Up to 3 ports can be operated as additional WAN ports. Ethernet ports can be electrically disabled in the LCOS configuration.
Config (Com) / V.24	Serial configuration interface / COM-port: 9,600 - 115,200 baud
USB	USB 2.0 hi-speed host port for connecting USB printers (USB print server), serial devices (COM-port server) or USB drives (FAT file system)

WAN protocols	
Ethernet	PPPoE, Multi-PPPoE, ML-PPP, PPTP (PAC or PNS) and IPoE (with or without DHCP), RIP-1, RIP-2, VLAN, GRE, EoGRE, L2TPv2 (LAC or LNS), IPv6 over PPP (IPv6 and IPv4/IPv6 dual stack session), IP(v6)oE (autoconfiguration, DHCPv6 or static)

Package content	
Cables	1 Ethernet cable, 3 m (kiwi colored connectors); 1 Ethernet cable, 3 m (green connectors); 1 IEC power cord 230 V (not for WW devices)
Mounting brackets	Two 19" brackets for rack mounting

Hereby, LANCOM Systems GmbH | Adenauerstrasse 20/B2 | D-52146 Wuersele, declares that this device is in compliance with Directives 2014/30/EU, 2014/35/EU, 2011/65/EU, and Regulation (EC) No. 1907/2006. The full text of the EU Declaration of Conformity is available at the following Internet address: www.lancom-systems.com/doc