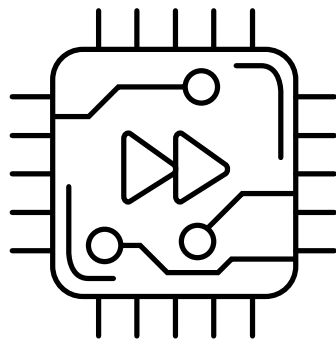
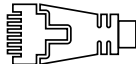


Hardware Quick Reference

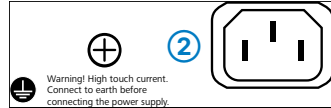
LANCOM GS-1108



- ① **TP Ethernet ports**
Connect one of the TP Ethernet ports 1-8 via an Ethernet cable to your end device or another LAN switch.



- ② **Power connector (on the back side of the device)**
Supply power to the device via the power connector on the back. Please use the supplied IEC power cable.



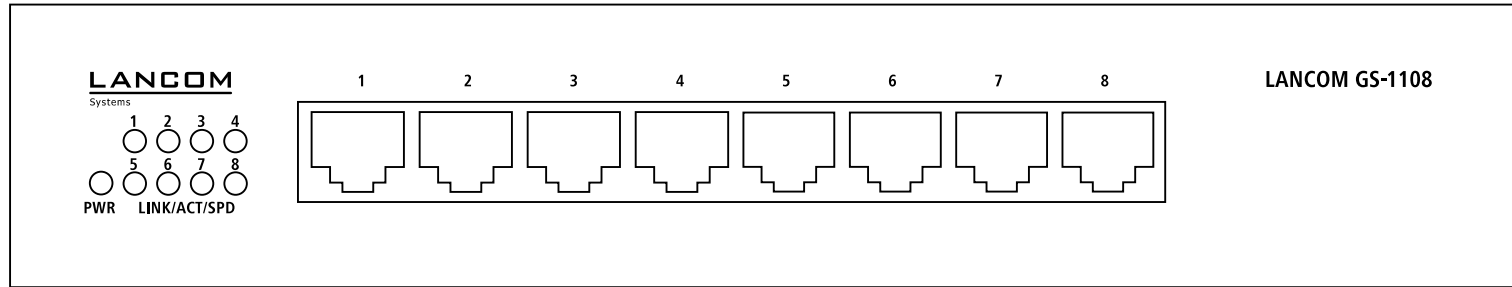
Before initial startup, please make sure to take notice of the information regarding the intended use in the enclosed installation guide!

Operate the device only with a professionally installed power supply at a nearby power socket that is freely accessible at all times.



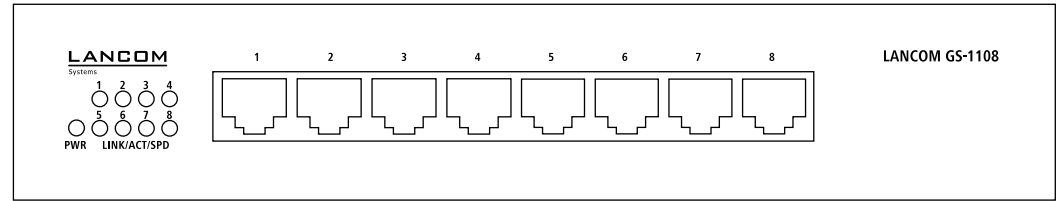
Please observe the following when setting up the device

- The power plug of the device must be freely accessible.
- For devices to be operated on the desktop, please attach the adhesive rubber footpads
- Do not rest any objects on top of the device
- Keep all ventilation slots on the side of the device clear of obstruction
- Please note that support service for third-party accessories is excluded.
- Please note that support service for third-party accessories is excluded.



①

Mounting & connecting



① ②

① PWR	② LINK/ACT/SPD
Off	Device switched off
Green	Device operational
	Green, permanently Link 1000 Mbps, no data transmission
	Green, flickering Data transmission 1000 Mbps
	Orange, permanently Link 10 / 100 Mbps, no data transmission
	Orange, flickering Data transmission 10 / 100 Mbps

Hardware	
Power supply	Internal power supply unit (110–230 V, 50–60 Hz)
Power consumption	Max. 10 watts
Environment	Temperature range 0–40 °C; humidity 10–90 %; non-condensing
Housing	Robust metal housing 197,2 × 35,5 × 120 mm (W x H x D), network connectors on the front
Number of fans	None; fanless design without rotating parts, high MTBF
Interfaces	
ETH	8 TP Ethernet ports 10 / 100 / 1000 Mbps
Package content	
Cable	1 IEC power cord

This product contains separate open-source software components which are subject to their own licenses, in particular the General Public License (GPL). The license information for the device firmware (LCOS) is available on the device's WEBconfig interface under "Extras > License information". If the respective license demands, the source files for the corresponding software components will be made available on a download server upon request.

Hereby, LANCOM Systems GmbH | Adenauerstrasse 20/B2 | D-52146 Wuerselen, declares that this device is in compliance with Directives 2014/30/EU, 2014/35/EU, 2011/65/EU, and Regulation (EC) No. 1907/2006. The full text of the EU Declaration of Conformity is available at the following Internet address: www.lancom-systems.com/doc