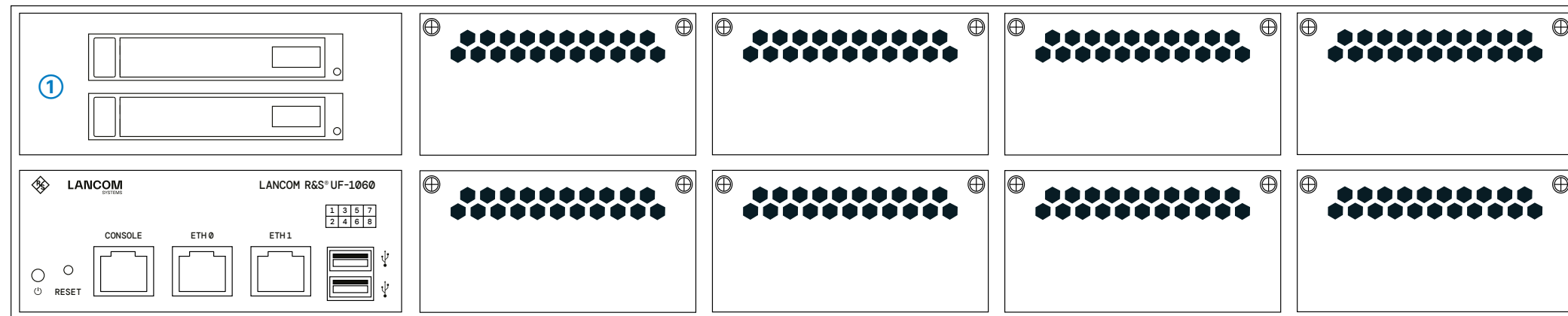
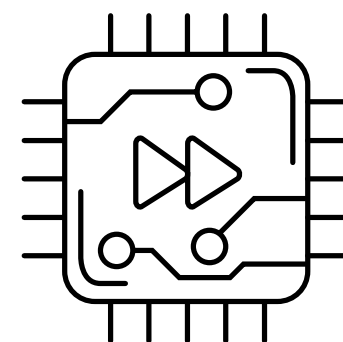


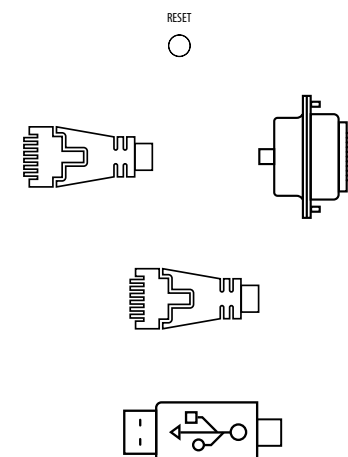
Hardware Quick Reference

LANCOM R&S®UF-1060

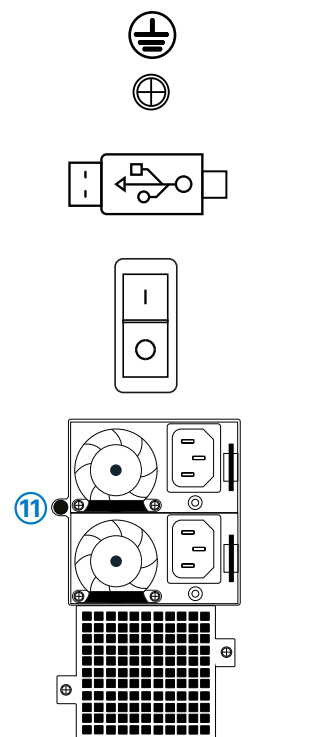


- ②
- ③
- ④
- ④
- ⑤

- ① **2 SSD slots**
For easy replacement of a defective SSD
- ② **RESET button**
Press the reset button to restart the device.
- ③ **Serial configuration interface RJ45 (CONSOLE)**
Maintenance interface for expert configuration. Not necessary for initial commissioning.
- ④ **TP Ethernet interfaces ETH0 - ETH1**
Connect the ETH0 - ETH1 TP Ethernet interfaces to additional network components using suitable Ethernet cables.
- ⑤ **USB 3.0 interfaces**
Interfaces for reinstallation of the device software. Not necessary for initial commissioning.
- ⑥ **8 slots for extension modules**
Slots for RJ45, SFP or SFP+ extension modules



- ⑦ **Grounding connection (rear panel)**
Screw for connecting a grounding cable
- ⑧ **USB 2.0 interface (rear panel)**
Interface for reinstalling the device software. Not necessary for initial commissioning.
- ⑨ **Mains switch (rear panel)**
Start up the device using the mains switch after you have connected the power supply.
- ⑩ **2 power supply modules (rear panel)**
Supply the device with power via both mains connections at the rear. Use the supplied power cables.
- ⑪ **Button for deactivating the audible alarm for power supply problems (rear panel)**
- ⑫ **4 fan modules (rear panel)**



Before initial startup, please make sure to take notice of the information regarding the intended use under www.lancom-systems.com/safety!

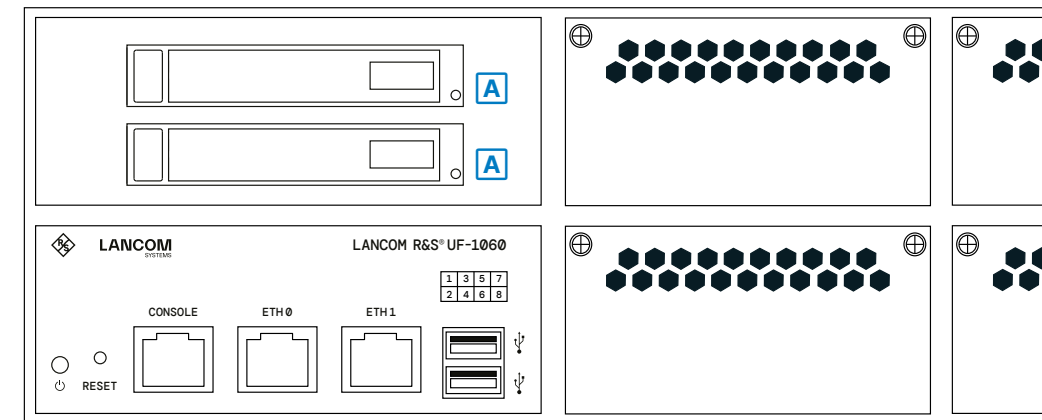
Operate the device only with a professionally installed power supply at a nearby power socket that is freely accessible at all times.



Please observe the following when setting up the device

- The mains plugs of the device must be freely accessible.
- Do not rest any objects on top of the device and do not stack multiple devices.
- Keep the device's ventilation slots clear of obstruction.
- Mount the device with the enclosed mounting material in a free 19" slot of an appropriate server rack.

Mounting & connecting



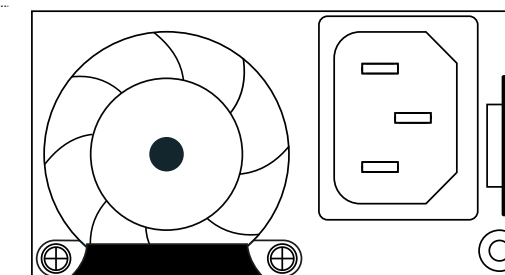
- ②
- ③
- ③

A LEDs SSD	
Off	No SSD read / write access
Green	SSD read / write access

B LEDs Power	
Off	Device switched off
Green	Device ready and accessible

C LEDs ETH0 - ETH1 - TP Ethernet	
LEDs left - Link activity	
Off	no link detected
Green, permanently	Link detected, no port activity
Green, blinking	Link detected, port activity
LEDs right - Link speed	
Off	Link speed 10 Mbps
Green, permanently	Link speed 1000 Mbps
Orange, permanently	Link speed 100 Mbps

D LED Power supply module	
Green	Status OK
Green, blinking	Only 12V (module off) or module in redundant state
Orange (2 modules installed)	Mains cable not plugged in or mains voltage lost; Second power supply unit with mains voltage
Orange (1 module installed)	Critical event in the power supply that causes a shutdown
Orange, blinking	Warning where the power supply continues to function



D

Hardware	
Power supply	2 power supply modules (100-240 V, 50-60 Hz)
Power consumption	Max. 550 W
Environment	Temperature range 0-40 °C; humidity 10-85 %, non-condensing
Housing	Robust metal housing 2 HU with pull-out rails for 19" rack mounting; Network connections on the front side
Fans	4 fan modules
Dimensions (mm)	440 x 88 x 603 (W x H x D) without mounting brackets
Interfaces	
ETH	2 10 / 100 / 1000 Mbps Gigabit Ethernet ports
USB	2 USB 3.0 ports (front panel); 1 USB 2.0 port (rear panel)
Console	1 RJ45 configuration interface
Package contents	
Accessories	2 IEC power cables 230 V; 1 serial configuration cable RJ45 - RS232; Extension rails for 19" rack mounting

Hereby, LANCOM Systems GmbH | Adenauerstrasse 20/B2 | D-52146 Wuerselen, declares that this device is in compliance with Directives 2014/30/EU, 2014/35/EU, 2011/65/EU, and Regulation (EC) No. 1907/2006. The full text of the EU Declaration of Conformity is available at the following Internet address: www.lancom-systems.com/doc