

# AirLancer SN-LAN

## Mounting Instructions

### General information about surge arrestors

Power surges caused by lightning regularly cause expensive damage to network infrastructures. To protect Ethernet or PoE ports against damage caused by overvoltage, it is imperative to use the AirLancer SN-LAN. Note that each port in need of protection requires its own separate surge arrestor.

### Notice about surge arrestor installation

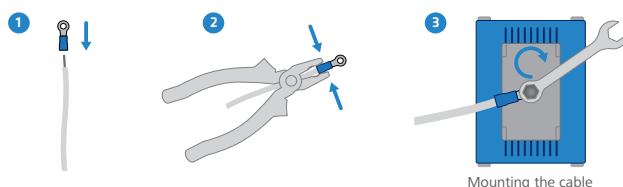
The usage of the surge arrestor assumes that the venue has a consistent lightning-protection concept in place. This includes direct lightning protection of the building according to VDE standards, and a lightning-protected power supply to the device.

**Surge arrestors may only be installed by qualified personnel.**

### Connecting the AirLancer SN-LAN

Using a suitable patch cable, connect the port of AirLancer SN-LAN that is marked with "Protected Side" to the Ethernet or PoE port that requires protection. Connect the rest of the network to the port of AirLancer SN-LAN that is marked with "Unprotected Side". The mounting of the AirLancer SN-LAN must be grounded so that overvoltages are conducted away to the building's earthing system.

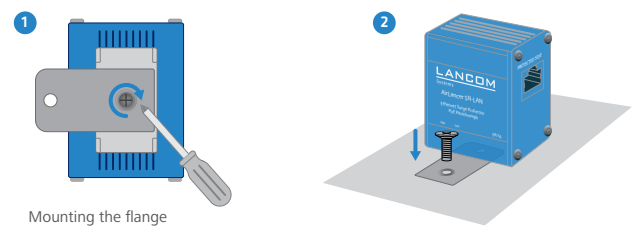
### Grounding by cable



The potential load equalization relies on a PE cable (protective earth, min. 1.5 mm<sup>2</sup>Cu) that is connected to the building's grounding system. Use a suitable crimping tool to connect the supplied cable lug to the PE cable. Then use the supplied bolt and locking washer to connect the cable

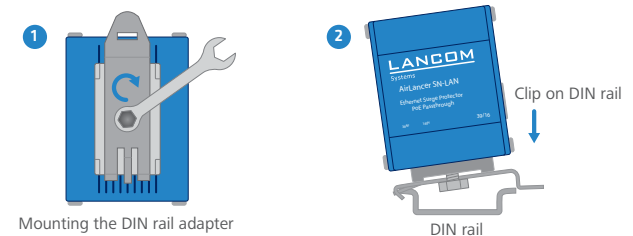
lug to the housing of the AirLancer SN-LAN. Make sure you have a tight connection. Connect the other end of the PE cable to the grounding system of the building.

### Grounding by flange



Connect the flange to the housing of the AirLancer SN-LAN using the supplied bolt. Be sure to use the countersunk hole in the flange. Make sure you have a tight connection. Fasten the flange to a properly grounded metal surface.

### Grounding by DIN rail mount



Connect the DIN rail mount to the housing of the AirLancer SN-LAN by means the supplied bolt and locking washer. Make sure you have a sufficiently tight connection. Attach the AirLancer SN-LAN to the DIN rail.